

FIELD DAY

August 2, 2016
10 a.m.

Water Technology Farm – T&O Farms, LLC

South of Garden City on Hwy 83 (15.5 miles) • Turn west on T.V. Rd • Turn south on Stone Rd • Location on east side at large outbuilding (see back)

RSVP to the Kansas Water Office
by July 26
1-888-KAN-WATER
kwo-info@kwo.ks.gov

AGENDA

Welcome

Tom Willis

Comments

Governor Brownback

Role of Water Technology Farms

Tracy Streeter

Introduce Partners

Technical Briefings

KSRE, Jonathan Aguilar

Seaman Crop Consulting, Loren Seaman

Dragon-Line, Monty Teeter

Water Conservation Area, KDA-DWR

Tour of Farm

Lunch Provided

by Conestoga Energy Partners

SPONSORS

T&O Farms, LLC (Tom Willis)

Kansas Water Office

Kansas Department of Agriculture

United Sorghum Check-off Program

Kansas Corn Commission

Seaman Crop Consulting

SW Groundwater Management District #3

Conestoga Energy Partners

Teeter Irrigation

Dragon-Line

Helena

Kansas Geological Survey

Ogallala Aquifer Program

Syngenta

Hortau

Servi-Tech Expanded Premium Services

Kansas Farm Bureau

K-State- Mesonet

AquaSpy

Kansas Grain Sorghum Commission

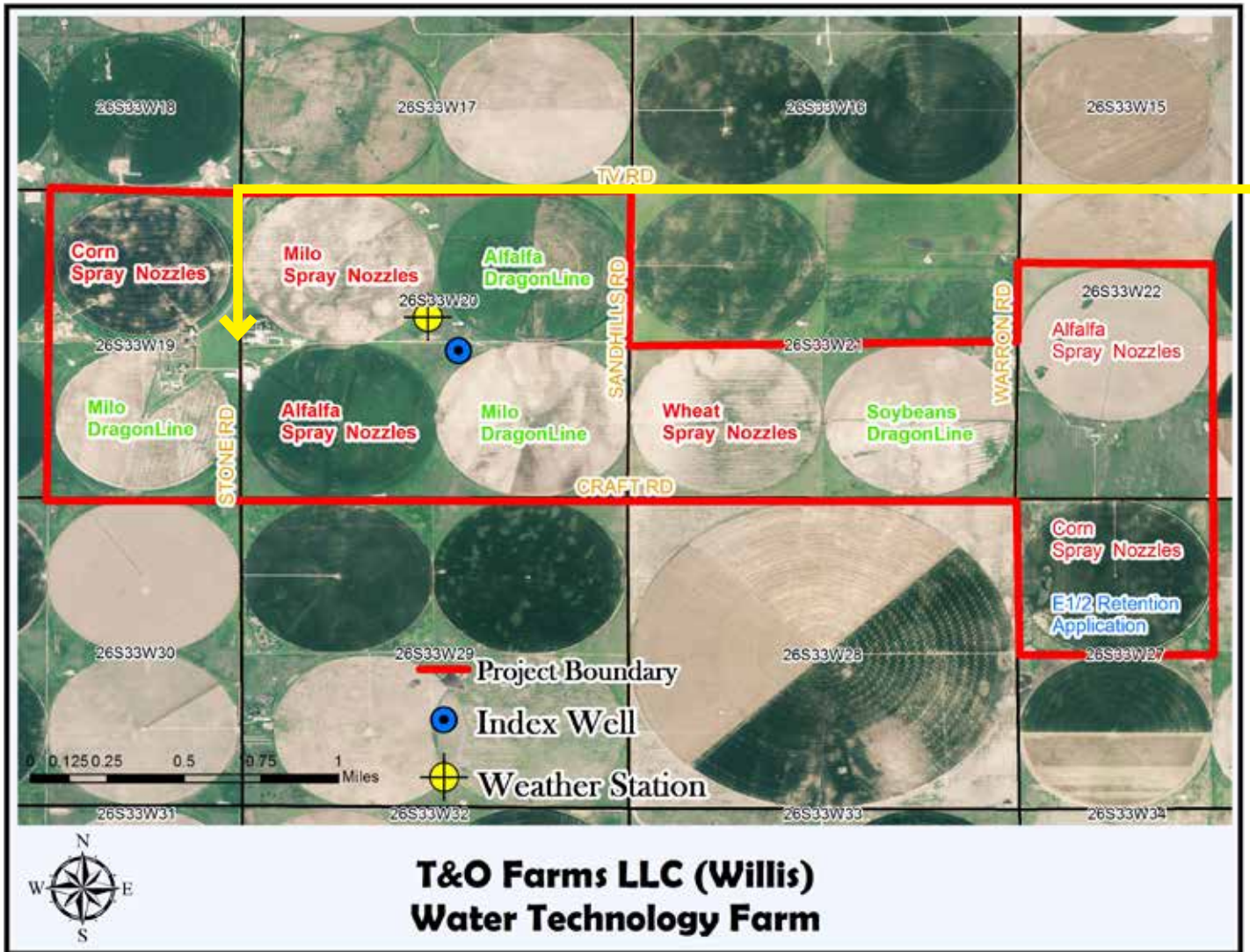
CropMetrics

Netafim

Valley Irrigation

Presley Solutions

*A public-private project for the conservation of the Ogallala aquifer
implemented as part of the Kansas Water Vision*



**T&O Farms LLC (Willis)
Water Technology Farm**

NOTES
